

Corners to be Indexed

S1/4 35-108-43
E1/4 35-108-43
SE COR 35-108-43

FEB 16 2021

Karen Brown

I hereby certify that this document and the data contained herein was prepared by me or under my direct supervision.

[Signature]

4/14/20
Date

Daniel L. Bueltel

License No. 43844

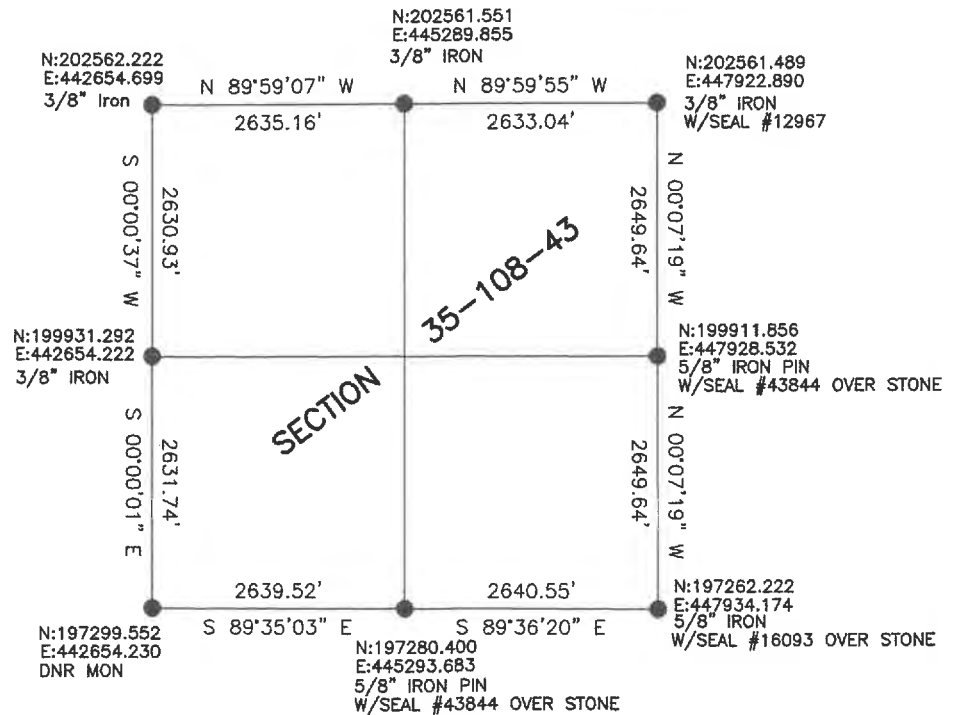
CERTIFICATE OF LOCATION OF GOVERNMENT CORNER

Land survey monuments situated in Section 35, Township 108, Range 43, 5TH P.M.

STATE OF MINNESOTA, County of Murray



- FOUND MONUMENT
- SET MONUMENT



Minnesota State Plane Coordinate
System Murray County Datum NAD83 (1996)

Statement of Evidence

S1/4 35-108-43

In 1866, J.W. Bishop did the original subdivision of the township.

On October 27, 1927, a 8" x 10" x 16" stone was set to establish the corner. (no name)

On April 19, 2019, Bueltel-Moseng Land Surveying dug with backhoe and found a 8" x 10" x 16" field stone in the centerline of road and inline with field line to the south. Set 5/8" iron pin w/seal #43844 over stone.

E1/4 35-108-43

In 1866, J.W. Bishop did the original subdivision of the township

On April 19, 2019 Bueltel-Moseng Land Surveying dug w/backhoe and found nothing. Set an 5/8" iron w/seal #43844 midway and online. It is in the centerline of the road and in line w/fence to the west.

SE 35-108-43

In 1866, J.W. Bishop did the original subdivision of the township

On October 27, 1927, a 34" stone with one flat side was set. (no name)

No Date, Timothy Bell, LS 16093, found stone and placed 5/8" rebar w/seal #16093 over stone.

On April 6, 1990, Madsen Land Surveying found a rebar with a cap 3" deep.

On April 19, 2019, Bueltel-Moseng Land Surveying found a 5/8" iron w/seal #16093